



# LEVEL

WALL DESIGN



LEVEL Red  
31,5x57 - 12<sup>3/8</sup>"x22<sup>1/2</sup>"

LEVEL Mosaico Grey  
31,5x57 - 12<sup>3/8</sup>"x22<sup>1/2</sup>"

## WALL DESIGN

# LEVEL

UNA COLLEZIONE ISPIRATA ALLA CONTEMPORANEITÀ DEL CEMENTO, IDEALE PER DONARE AGLI AMBIENTI UN LOOK METROPOLITANO E MINIMALE.

A COLLECTION INSPIRED BY THE CONTEMPORARY APPEAL OF CEMENT, PERFECT TO GIVE SPACES A METROPOLITAN AND MINIMAL LOOK.

Une collection inspirée à la contemporanéité du ciment, idéale pour donner aux espaces un look métropolitain et minimal.

Eine Kollektion inspiriert durch die Modernität von Zement, ideal, um Ambienten einen großstädtischen und minimalen Look zu verleihen.

Una colección que se inspira en la contemporaneidad del cemento, ideal para donar un look metropolitano y esencial a los ambientes.

1

ASPETTO  
APPEARANCE  
ASPECT  
OPTIK  
ASPECTO



1

SUPERFICIE  
SURFACE  
SURFACE  
OBERFLÄCHE  
SUPERFICIE



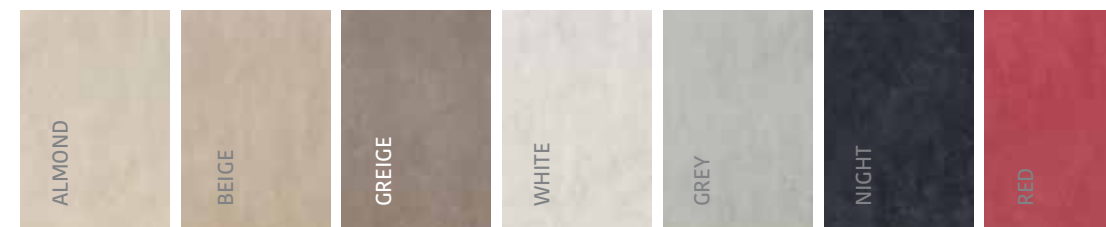
1

FORMATO  
FORMAT  
FORMAT  
FORMAT  
FORMATO



7

COLORI  
COLOURS  
COLORIS  
FARBEN  
COLORES



# LEVEL

LEVEL Almond  
31,5x57 - 12<sup>3/8</sup>"x22<sup>1/2</sup>"

LEVEL Beige  
31,5x57 - 12<sup>3/8</sup>"x22<sup>1/2</sup>"

LEVEL Mosaico Multicolor  
31,5x57 - 12<sup>3/8</sup>"x22<sup>1/2</sup>"

LEVEL Patchwork Almond  
31,5x57 - 12<sup>3/8</sup>"x22<sup>1/2</sup>"

LEGEND Magnolia  
20x60 - 7<sup>7/8</sup>"x23<sup>3/8</sup>"

LEVEL Almond  
31,5x57 - 12<sup>3/8</sup>"x22<sup>1/2</sup>"

LEVEL Patchwork Almond  
31,5x57 - 12<sup>3/8</sup>"x22<sup>1/2</sup>"







**LEVEL Night**  
31,5x57 - 12<sup>3</sup>/<sub>8</sub>"x22<sup>1</sup>/<sub>2</sub>"

**LEVEL White**  
31,5x57 - 12<sup>3</sup>/<sub>8</sub>"x22<sup>1</sup>/<sub>2</sub>"

**LEVEL Stripes Night**  
31,5x57 - 12<sup>3</sup>/<sub>8</sub>"x22<sup>1</sup>/<sub>2</sub>"

**UP Black**  
45x45 - 17<sup>3</sup>/<sub>4</sub>"x17<sup>3</sup>/<sub>4</sub>"

# LEVEL

**LEVEL Night**  
31,5x57 - 12<sup>3</sup>/<sub>8</sub>"x22<sup>1</sup>/<sub>2</sub>"

**LEVEL White**  
31,5x57 - 12<sup>3</sup>/<sub>8</sub>"x22<sup>1</sup>/<sub>2</sub>"

**LEVEL Stripes Night**  
31,5x57 - 12<sup>3</sup>/<sub>8</sub>"x22<sup>1</sup>/<sub>2</sub>"



# LEVEL

LEVEL Beige  
31,5x57 - 12<sup>3/8</sup>"x22<sup>1/2</sup>"

LEVEL Greige  
31,5x57 - 12<sup>3/8</sup>"x22<sup>1/2</sup>"

LEVEL Stripes Beige  
31,5x57 - 12<sup>3/8</sup>"x22<sup>1/2</sup>"

LEVEL Beige  
31,5x57 - 12<sup>3/8</sup>"x22<sup>1/2</sup>"

LEVEL Greige  
31,5x57 - 12<sup>3/8</sup>"x22<sup>1/2</sup>"

LEVEL Stripes Beige  
31,5x57 - 12<sup>3/8</sup>"x22<sup>1/2</sup>"





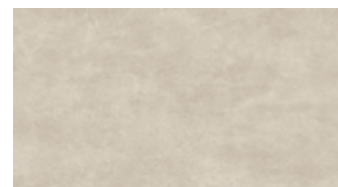
# LEVEL

WALL TILES

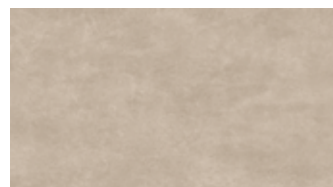


RIVESTIMENTI IN PASTA BIANCA  
WHITE-BODY WALL TILES  
REVÊTEMENTS EN PÂTE BLANCHE  
WEISSSCHERBIGE WANDFLIESEN  
REVESTIMIENTOS EN PASTA BLANCA

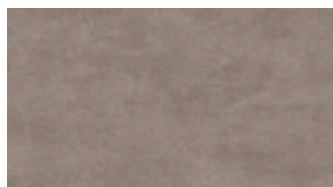
Conforme alla norma ISO 13006 Appendice L gruppo B111  
Compliant with standards ISO 13006 Annex L group B111



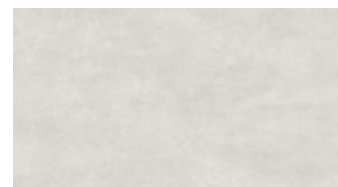
**9LEL** LEVEL Almond  
31,5x57 - 12<sup>3/8</sup>"x22<sup>1/2</sup>"



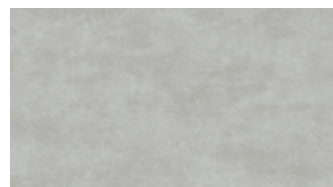
**9LEI** LEVEL Beige  
31,5x57 - 12<sup>3/8</sup>"x22<sup>1/2</sup>"



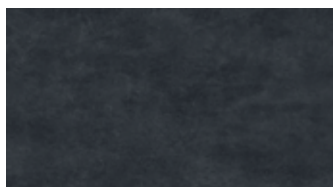
**9LEF** LEVEL Greige  
31,5x57 - 12<sup>3/8</sup>"x22<sup>1/2</sup>"



**9LEH** LEVEL White  
31,5x57 - 12<sup>3/8</sup>"x22<sup>1/2</sup>"



**9LEY** LEVEL Grey  
31,5x57 - 12<sup>3/8</sup>"x22<sup>1/2</sup>"



**9LET** LEVEL Night  
31,5x57 - 12<sup>3/8</sup>"x22<sup>1/2</sup>"



**9LED** Level Red  
31,5x57 - 12<sup>3/8</sup>"x22<sup>1/2</sup>"



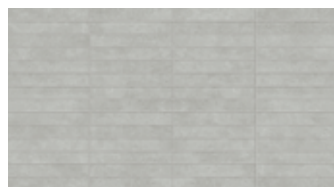
**9LAT** LEVEL Patchwork Almond  
31,5x57 - 12<sup>3/8</sup>"x22<sup>1/2</sup>"



**9LML** LEVEL Mosaico Almond  
31,5x57 - 12<sup>3/8</sup>"x22<sup>1/2</sup>"



**9LMU** LEVEL Mosaico Multicolor  
31,5x57 - 12<sup>3/8</sup>"x22<sup>1/2</sup>"



**9LMF** LEVEL Mosaico Grey  
31,5x57 - 12<sup>3/8</sup>"x22<sup>1/2</sup>"



**9LSN** LEVEL Stripes Night  
31,5x57 - 12<sup>3/8</sup>"x22<sup>1/2</sup>"



**9LRS** LEVEL Stripes Red  
31,5x57 - 12<sup>3/8</sup>"x22<sup>1/2</sup>"



**9LSA** LEVEL Stripes Beige  
31,5x57 - 12<sup>3/8</sup>"x22<sup>1/2</sup>"



**LLLE** Level Listello Beige  
5x57 - 2"x22<sup>1/2</sup>"

SUPERFICIE: SATINATA  
SURFACE: SATIN  
SURFACE: SATINÉE  
OBERFLÄCHE: SATINERTE  
SUPERFICIE: SATINADA

FORMATO - SPESSORE:  
SIZE - THICKNESS  
FORMAT - ÉPAISSEUR  
FORMAT - STÄRKE  
FORMATO - GROSOR  
**31,5x57 - 12<sup>3/8</sup>"x 22<sup>1/2</sup>"** **8,5 mm**

MADE IN ITALY



## PAVIMENTO COORDINATO SUITABLE FLOOR CERAMIC TILES

Carreaux de sol conseilles - Passende Bodenfliesen - Pavimento coordinato

	BLOCK IN*	BREATH*	LEGEND*	REALM*	UP*
LEVEL White	Beige, Grigio, Fumo	Natural	Honey	Gray, Greige, Smoke	Ice, Iron, Black
LEVEL Almond	Bianco, Grigio	White	Magnolia	White, Gray	Dust
LEVEL Beige	Beige	White	Magnolia	Greige	
LEVEL Greige		White	Magnolia, Walnut		
LEVEL Grey	Bianco, Fumo	White, Cognac	Magnolia, Cognac	White, Smoke	Black
LEVEL Night	Bianco, Grigio, Beige			White, Gray, Greige	Ice, White, Black
LEVEL Red	Bianco, Grigio, Fumo	White, Cognac	Magnolia, Cognac	White, Gray, Smoke	Ice, White, Iron, Black

\* Gres porcellanato colorato in massa. Coloured body porcelain tiles.  
Gres cérame coloré dans la masse. Durchgefärbtes Feinsteinzeug. Gres porcelánico coloreado en masa.



# RIVESTIMENTI IN PASTA BIANCA • White-body wall tiles

REVÊTEMENTS EN PÂTE BLANCHE • WEISSSCHERBIGE WANDFLIESEN • REVESTIMIENTOS EN PASTA BLANCA

CARATTERISTICHE TECNICHE / TECHNICAL DATA / CARACTERÍSTICAS TÉCNICAS / TECHNISCHE DATEN / CARATTERISTICHE TECNICHE

Conforme alla norma EN 14411 Appendice L gruppo BIII  
Conforme alla norma ISO 13006 Appendice L gruppo BIII

Compliant with standards  
Compliant with standards

EN 14411 Annex L group BIII  
ISO 13006 Annex L group BIII

	Caratteristiche tecniche Technical features	Metodo di prova Test Method	Requisiti per dimensione nominale N Requirements for nominal size N			LEVEL wall design
			7 cm ≤ N < 15 cm		N ≥ 15 cm	
			(mm)	(%)	(mm)	
Caratteristiche di regolarità Regularity characteristics	Lunghezza e larghezza Length and width Spessore Thickness Rettilinearità degli spigoli Straightness of sides Ortogonalità Rectangularity	ISO 10545-2	± 0,75 <sup>(*)</sup>	± 0,5 <sup>(*)</sup>	± 2,0 <sup>(*)</sup>	Conforme Suitable For
			± 0,5 <sup>(**)</sup>	± 10 <sup>(**)</sup>	± 0,5 <sup>(**)</sup>	Conforme Suitable For
			± 0,5 <sup>(***)</sup>	± 0,3 <sup>(***)</sup>	± 1,5 <sup>(***)</sup>	Conforme Suitable For
			± 0,75 <sup>(****)</sup>	± 0,5 <sup>(****)</sup>	± 2,0 <sup>(****)</sup>	Conforme Suitable For
	Planarità Surface flatness		c.c. + 0,75 - 0,50	c.c. + 0,5 - 0,3	c.c. + 2,0 - 1,5	Conforme Suitable For
			e.c. + 0,75 - 0,50	e.c. + 0,5 - 0,3	e.c. + 2,0 - 1,5	
			w. ± 0,75	w. ± 0,5	w. ± 2,0	
			<b>EN 14411 annex L (Group BIII)</b> EN 14411 appendice L (Gruppo BIII)		<b>ISO 13006 annex L (Group BIII)</b> ISO 13006 appendice L (Gruppo BIII)	
Caratteristiche strutturali Structural characteristics	Massa d'acqua assorbita (come % della massa) Water absorption (in % by mass)	ISO 10545-3	<b>Media &gt;10%. Se questo valore &gt; 20%, deve essere indicato.</b> <b>Valore Singolo &gt; 9%</b> Average >10%. When the average > 20%, this shall be indicated. Individual value > 9%	<b>Media &gt;10%. Se questo valore &gt; 20%, deve essere indicato.</b> <b>Valore Singolo &gt; 9%</b> Average >10%. When the average > 20%, this shall be indicated. Individual value > 9%	10% < E <sub>s</sub> ≤ 20%	
Caratteristiche meccaniche massive Bulk mechanical characteristics	Sforzo di rottura Breaking strength	ISO 10545-4	S ≥ 600N	S ≥ 600N	S ≥ 600 N	
	Resistenza alla flessione Modulus of rupture		R ≥ 15N/mm <sup>2</sup>	R ≥ 15N/mm <sup>2</sup>	R ≥ 20 N/mm <sup>2</sup>	
Caratteristiche termico igrometriche Thermal and hygrometric characteristics	Coefficiente di dilatazione termica lineare Coefficient of thermal linear expansion	ISO 10545-8	Dichiarare un valore Declared value	Metodo di prova disponibile Test method available	≤ 7 MK <sup>-1</sup>	
	Resistenza agli sbalzi termici Thermal shock resistance	ISO 10545-9	Test superato in accordo con ISO 10545-1 Pass according to ISO 10545-1	Metodo di prova disponibile Test method available	Resiste Resistant	
	Dilatazione all'umidità (in mm/m) Moisture expansion (in mm/m)	ISO 10545-10	Dichiarare un valore Declared value	Metodo di prova disponibile Test method available	≤ 0,06% (0,6mm/m)	
Proprietà fisiche Physical properties	Resistenza ai Cavilli: Piastrelle Smaltate Craze Resistance: Glazed Tiles	ISO 10545-11	Test superato in accordo con ISO 10545-1 Pass according to ISO 10545-1	Metodo di prova richiesto Required	Resiste Resistant	
	Adesione a trazione con adesivi cementizi migliorati Bond strength/adhesion for improved cementitious adhesives	EN 1348	Dichiarare un valore Declared value	-	≥ 1,0 N/mm <sup>2</sup> (Class C2 - EN 12004) (Class C2 - EN 12004)	
	Reazione al fuoco Reaction to fire	-	Class A1 or A1 <sub>s</sub> Classe A1 oppure A1 <sub>s</sub>	-	A1	
Caratteristiche chimiche Chemical characteristics	Resistenza ai prodotti chimici di uso domestico ed agli additivi per piscina Resistance to household chemicals and swimming pool salts	ISO 10545-13	Classe minima B (GB per piastrelle smaltate) Minimum Class B (GB for glazed tiles)	Classe minima B (GB per piastrelle smaltate) Minimum Class B (GB for glazed tiles)	GA	
	Resistenza a basse concentrazioni di acidi e alcali Resistance to low concentrations of acids and alkalis		Dichiarare una Classe Declared Class	Metodo di prova disponibile Test method available	GLA	
	Resistenza ad alte concentrazioni di acidi e alcali Resistance to high concentrations of acids and alkalis		Dichiarare una Classe Declared Class	Metodo di prova disponibile Test method available	GHA	
	Resistenza alle macchie Resistance to staining	ISO 10545-14	Classe 3 minima Minimum Class 3	Classe 3 minima Minimum Class 3	5	
	Rilascio di sostanze pericolose: Cadmio (in mg/dm <sup>2</sup> ) e Piombo (in mg/dm <sup>2</sup> ) Release of dangerous substances: Cadmium (in mg/dm <sup>2</sup> ) and Lead (in mg/dm <sup>2</sup> )	ISO 10545-15	Dichiarare un valore Declared value	Metodo di prova disponibile Test method available	≤ 0,01 mg/dm <sup>2</sup> Cd ≤ 0,1 mg/dm <sup>2</sup> Pb	

(\*) Deviazione ammissibile, in % oppure mm, della dimensione media di ogni piastrella (2 oppure 4 lati) dalla dimensione di fabbricazione (WS).  
The permissible deviation, in % or mm, of the average size for each tile (2 or 4 sides) from work-size (WS).

(\*\*) Deviazione ammissibile, in % oppure mm, dello spessore medio di ogni piastrella dallo spessore riportato nella dimensione di fabbricazione (WS).  
The permissible deviation, in % or mm, of the average thickness for each tile from the work size thickness (WS).

(\*\*\*) Deviazione massima ammissibile di rettilinearità, in % oppure mm, in rapporto alle dimensioni di fabbricazione (WS) corrispondenti.  
The maximum permissible deviation from straightness, in % or mm, related to the corresponding work sizes (WS).

(\*\*\*\*) Deviazione massima ammissibile di ortogonalità, in % oppure mm, in rapporto alle dimensioni di fabbricazione (WS) corrispondenti.  
The maximum permissible deviation from rectangularity, in % or mm, related to the corresponding work sizes (WS).

c.c. Deviazione massima ammissibile della curvatura del centro, in % oppure mm, in rapporto alla diagonale calcolata secondo le dimensioni di fabbricazione (WS).  
The maximum permissible deviation from centre curvature, in % or mm, related to diagonal calculated from the work sizes (WS).

e.c. Deviazione massima ammissibile della curvatura dello spigolo, in % oppure mm, in rapporto alle dimensioni di fabbricazione (WS) corrispondenti.  
The maximum permissible deviation from edge curvature in % or mm, related to the corresponding work sizes (WS).

w. Deviazione massima ammissibile dello svergolamento, in % oppure mm, in rapporto alla diagonale calcolata secondo le dimensioni di fabbricazione (WS).  
The maximum permissible deviation from warpage, in % or mm, related to diagonal calculated from the work sizes (WS).