

DIALOGO

**INSTALLATION
INSTRUCTIONS**

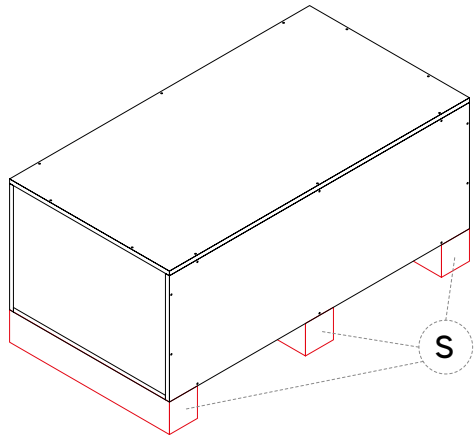


atlas concorde
habitat



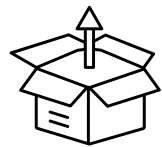
Handling

Wall-mounted/Sit-on/Free-standing washbasin



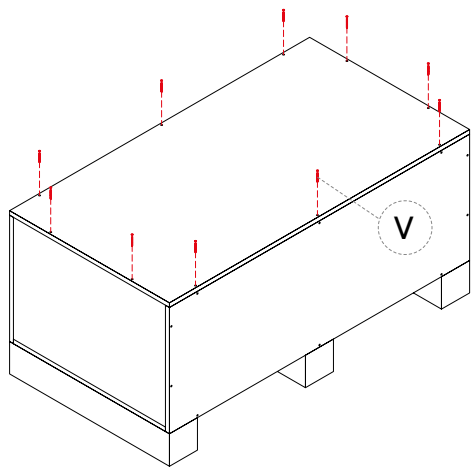
Move the unit as close as possible to the application area within its packaging. Make as fewer movements as possible to remove the washbasin out of its packaging. At least two operators should carry it and always in compliance with the recommended limits for manual lifting of loads. Due to the fragility of the Washbasin, handle it with extreme caution, even in its packaging.

The washbasin is delivered in a wooden crate with wooden support feets (**S**) for easy handling and storage.



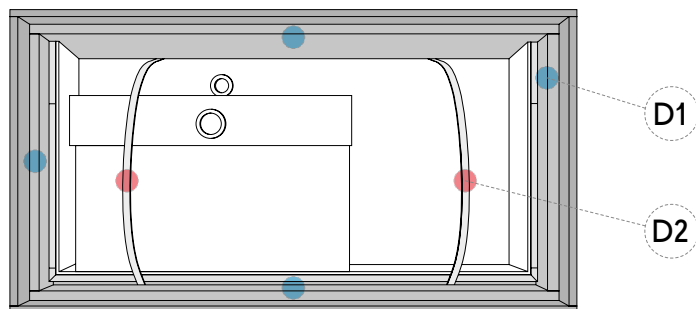
Unpacking

Wall-mounted/Sit-on/Free-standing washbasin

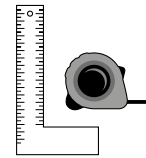


Unpack the washbasin in a space suitable for safe and ergonomic operations.

Open the wooden crate by removing the locking screws (**V**) on the outer panels.



Carefully remove all the anti-shock support bands (**D1**) and then use the appropriate plastic bands (**D2**) to extract the washbasin from the wooden crate, taking care to keep it in a horizontal position.



Installation

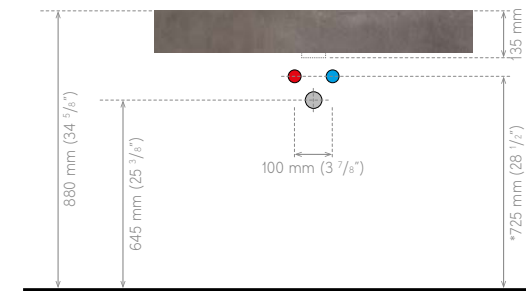
Wall-mounted washbasin

Preliminary steps

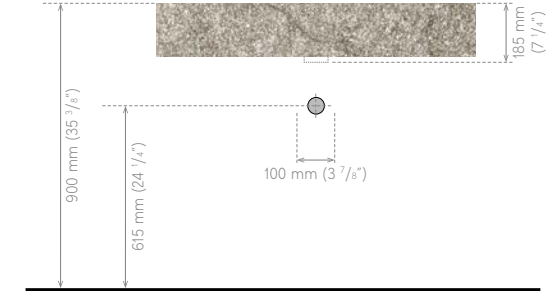
Before drilling into the wall support, you need to:

- check the position of drains and delivery connections*
- determine the height of the washbasin from the ground

*For tap on top

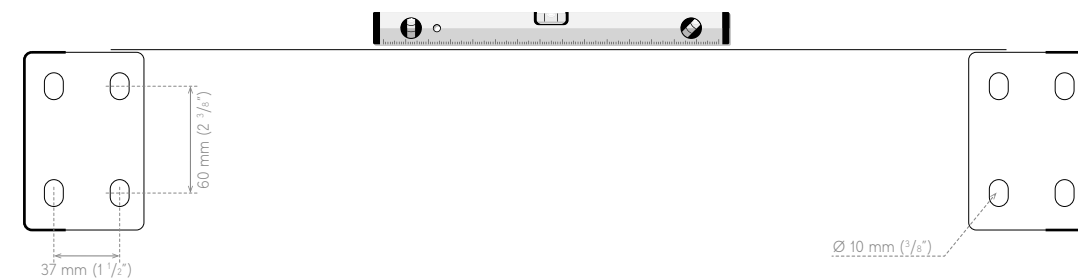


Recommended dimensions single washbasin



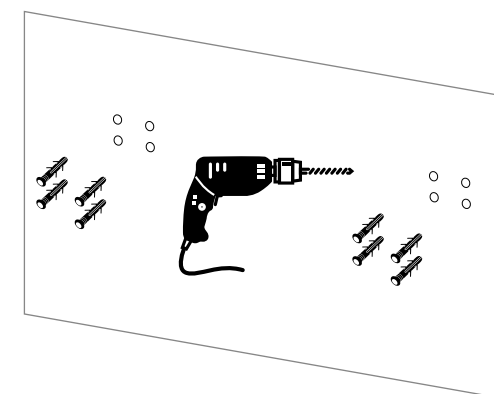
Recommended dimensions designer washbasin

- check the distance from the top edge of the bracket to the top edge of the washbasin
- mark the position of the holes using the bracket as a template
- ensure perfect horizontality
- check for the absence of system tracks in the area of the wall substrate affected by the drilling



Drilling

- drill holes in the wall using a suitable tool
- clean the hole of dust residues
- use fasteners suitable for the type of wall

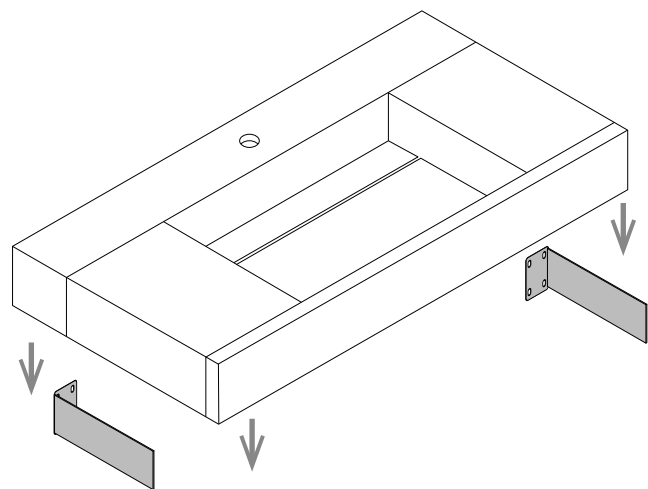


Bracket positioning

- fix the brackets to the wall using the holes provided using the selected anchor bolts
- check the correct flatness of the brackets at several points. In the event of unevenness and/or lack of squareness, correct this using spacers.

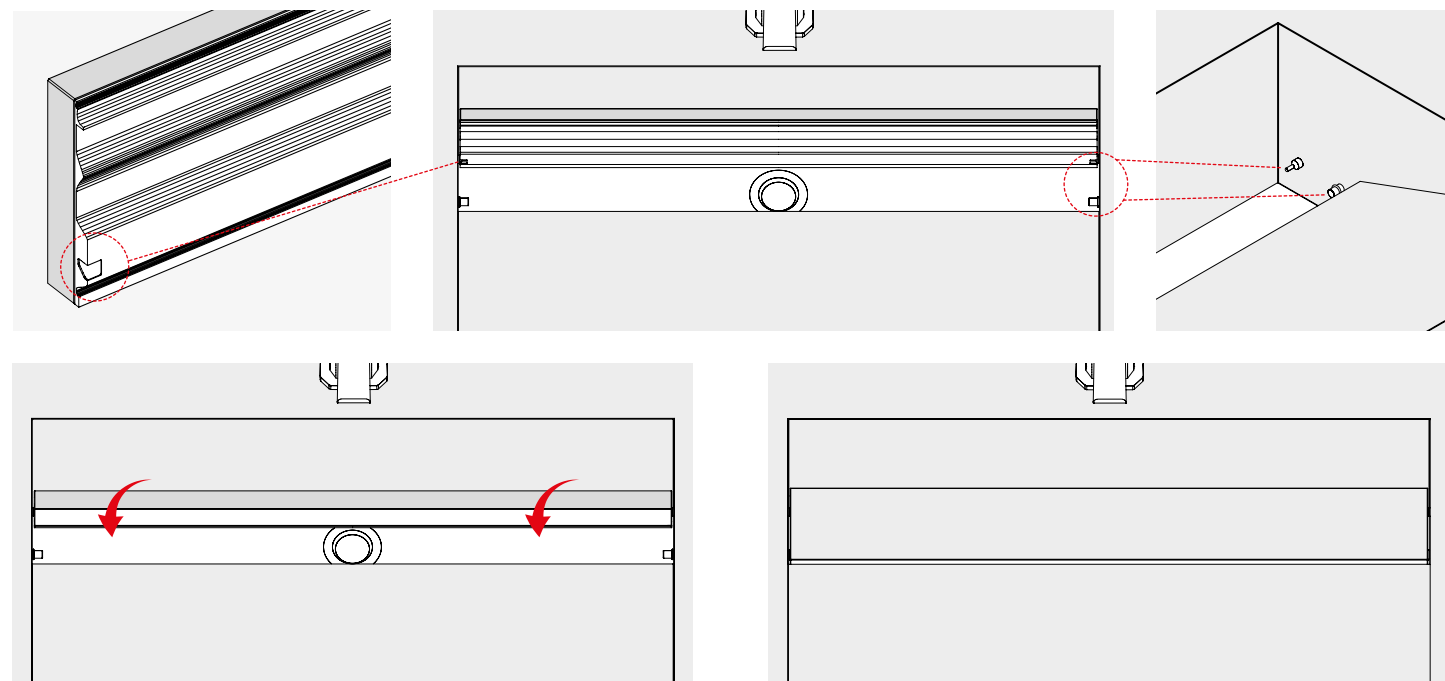
Washbasin positioning

- apply an even layer of silicone to the top of the brackets
- position the washbasin in its final location by resting it on the brackets. The operation must be carried out during the period in which the silicone retains its full adhesive power



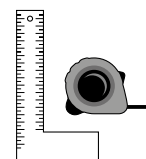
- the normal drying cycle of the silicone must be observed before any other operation

- carefully place the swinging panel in its place by inserting the pins on the sides of the basin into the appropriate slots on the back of the swinging panel



Hydraulic fittings

- connect the drain (1" 1/4) which is not included, to the drain pipe by screwing it to the selected siphon trap
- if the washbasin is fitted with the mixer on the unit, Ø 35 mm hole, install it, taking care to apply a tightening torque that does not create fractures or tension on the unit and in any case not over 12 Nm
- check the hydraulic tightness of the fittings by activating the water deliveries



Installation

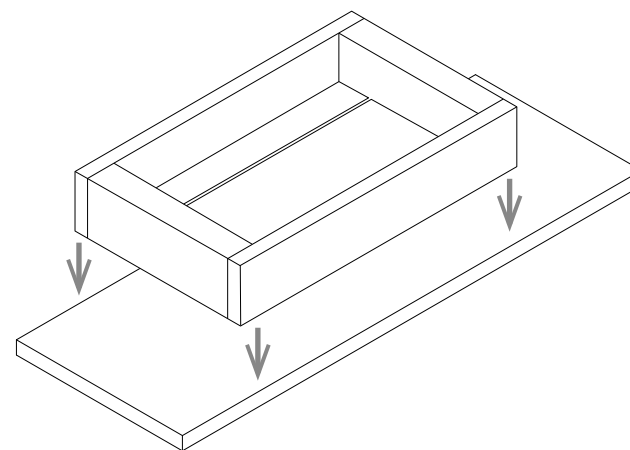
Sit-on basin

Preliminary steps

- check that the top surface where the product is to be installed is perfectly flat
- ensure that the top surface has adequate strength and rigidity to support the unit and to ensure full functionality in service

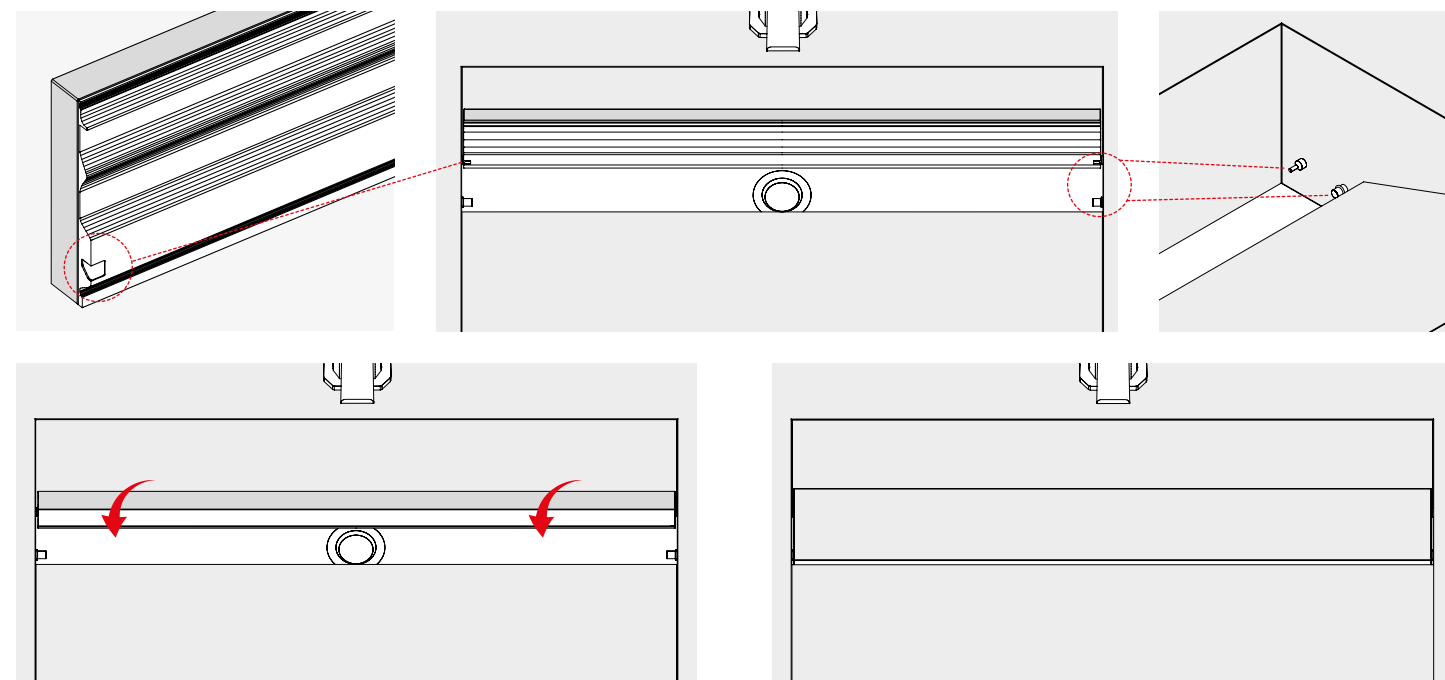
Washbasin positioning

- clean the top surface, taking care to remove traces of dirt and dust
- check the position of the washbasin in relation to all other elements
- once the position has been defined, turn the washbasin upside down and apply silicone evenly to the lower edge



- carefully place the washbasin in its final location. The operation must be carried out during the period in which the silicone retains its full adhesive power

- carefully place the swinging panel in its place by inserting the pins on the sides of the basin into the appropriate slots on the back of the swinging panel

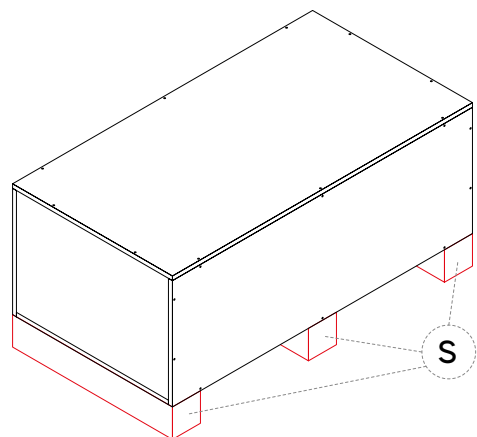


Hydraulic fittings

- connect the drain (1" 1/4) which is not included, to the drain pipe by screwing it to the selected siphon trap
- check the hydraulic tightness of the fittings by activating the water deliveries

Handling

Chest of drawers

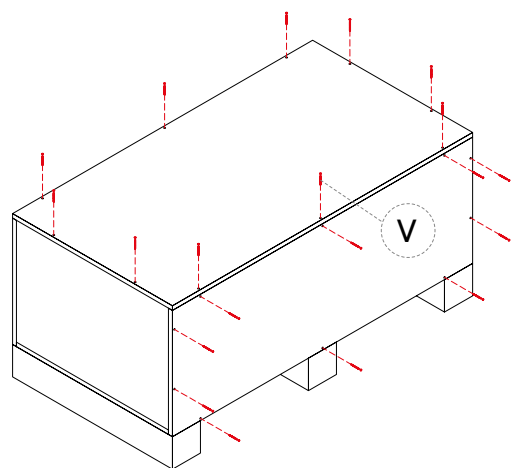


Move the drawer unit as close as possible to the application area within its packaging. Move the drawer unit as less as possible out of its packaging. Carry it in at least two operators and in always in compliance with the recommended limits for manual lifting of loads. Due to the fragility of the drawer unit, handle it with extreme caution, even in its packaging.

The drawer unit is delivered in a wooden crate with wooden support feet (S) for easy handling and storage.

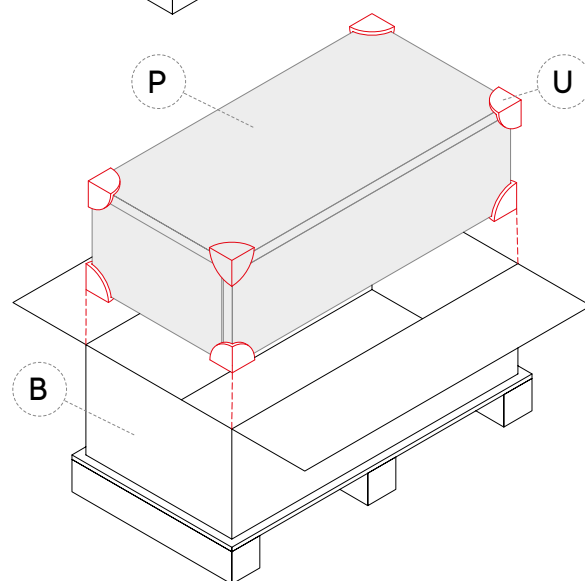
Unpacking

Chest of drawers

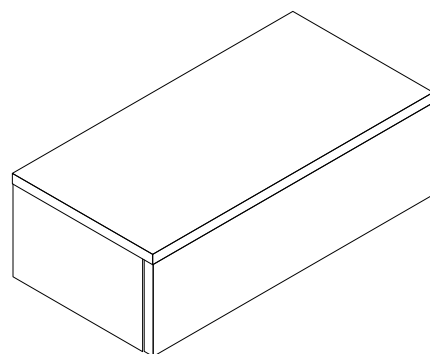


Unpack the drawer unit in a space suitable for safe and ergonomic operations.

Open the wooden crate by removing the locking screws (V) on the outer panels.



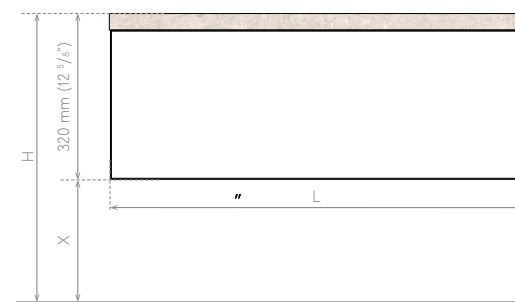
Carefully remove any wooden transport reinforcements and take out the drawer unit still packed in the reinforced cardboard box (B). Open the box and carefully remove all shock-absorbing angle (U) and the protective plastic casing (P), taking care to keep it horizontal at all times.



Installation

Chest of drawers

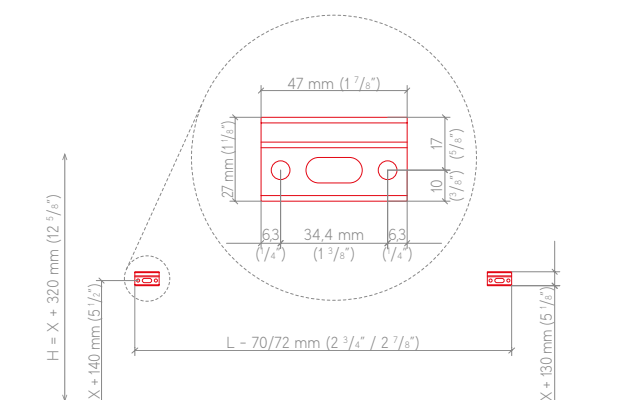
Preliminary steps



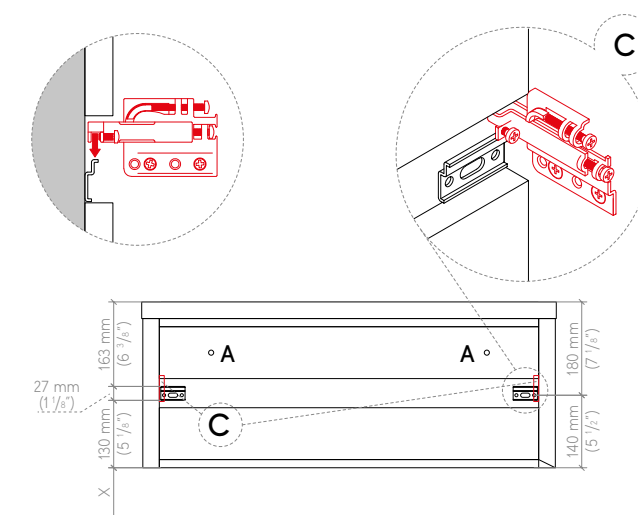
Before drilling into the wall support, you need to:

- determine the height of the drawer unit from ground (X)
- check for the absence of system tracks in the area of the wall substrate affected by the drilling

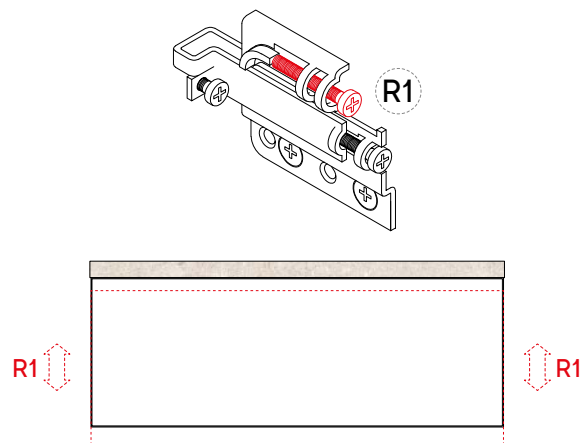
Wall mounting



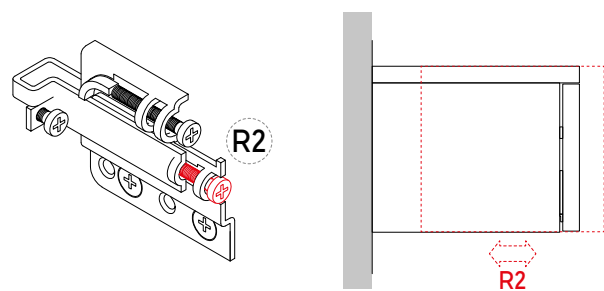
Fasten the metal hooks supplied to the wall in accordance with the dimensional diagram shown and bearing in mind that "X" is the final distance from ground at which the drawer unit is to be hung. The installation distance between the two hooks is equal to the drawer unit width "L" minus (-) 70/72 mm (2 3/4" / 2 7/8"). Use fasteners suitable for the type of wall.



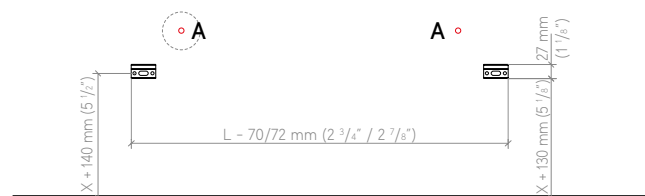
Place the drawer unit on the wall-mounted hooks using the adjustable holders (C). After levelling the drawer unit, mark the holes (A) in the wooden band at the back of the drawer unit on the wall.



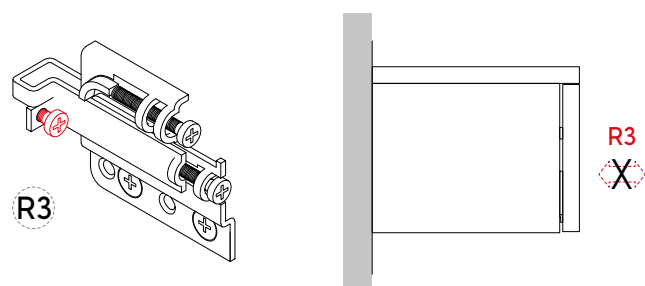
Use the screw (**R1**) on the adjustable holders to level the drawer unit. Turn clockwise to lift the corresponding drawer unit side. Vice versa in a counter-clockwise direction.



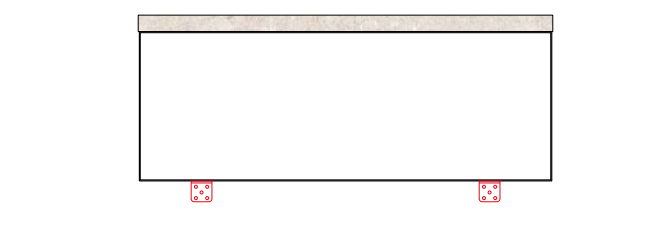
Use the screw (**R2**) on the holders to pull the drawer unit close to the wall. Turning the screw clockwise will pull the drawer unit against the wall until it is snug against it.



Remove the drawer unit and drill holes in the wall at the following points (**A**) using fasteners suitable for the type of wall.



Use the screw (**R3**) on the holders as an additional lock and anti-unhooking action. Turn the screw clockwise to tighten the mechanism.

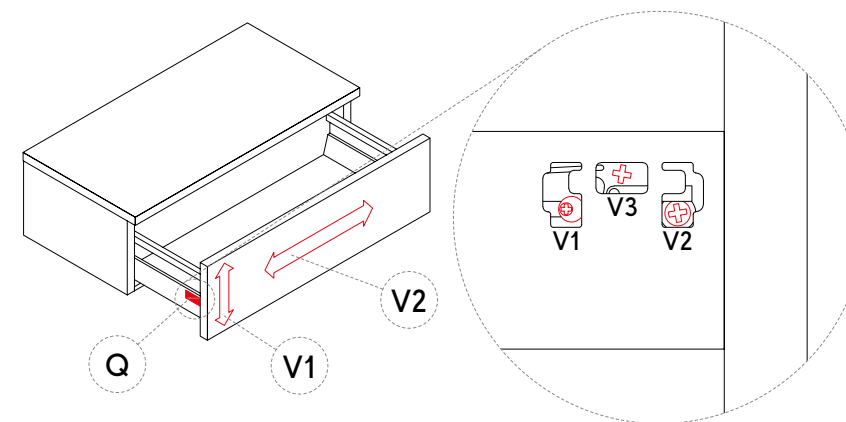


Refit the chest of drawers to the metal hooks using the adjustable holders (**C**), check that the drawer unit is level as previously adjusted, and proceed to fasten the elements (**A**) to the wall.

Insert two or more metal angle irons underneath the drawer unit to make it even tighter. Use fasteners suitable for the type of wall.

Adjusting the drawer rails:

- Only make all drawer adjustments after the drawer unit has been properly installed on the wall.

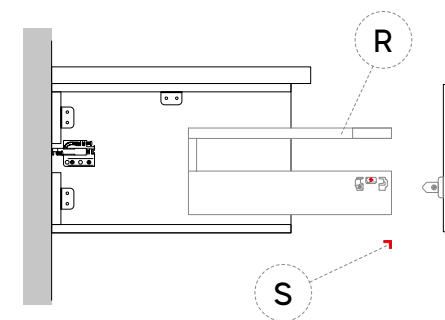


Pull out the drawer and remove the plastic cover plate (**Q**) to access the adjustment screws (**V1**) and (**V2**).

V1 - HORIZONTAL ADJUSTMENT - Acting on screw (**V1**) the drawer front panel can be moved in height.

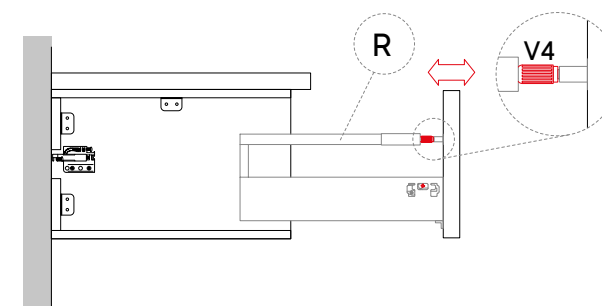
V2 - HORIZONTAL ADJUSTMENT - Acting on screw (**V2**) the drawer front panel can be moved in width.

The adjustments (**V2**) on the left and right rails are reciprocally dependent, so for example to move the front panel to one of the two sides it is necessary to tighten the screw (**V2**) on the left rail and unscrew it on the right rail.



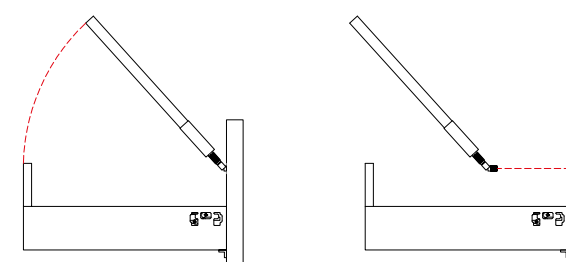
V3 - FRONT PANEL REMOVAL - By turning the screw (**V3**) on both guides, the front panel can be fully removed. To carry out this operation, the fixing brackets (**S**) must first be removed from under the front and the relings (**R**) from their seats.

Reling adjustment



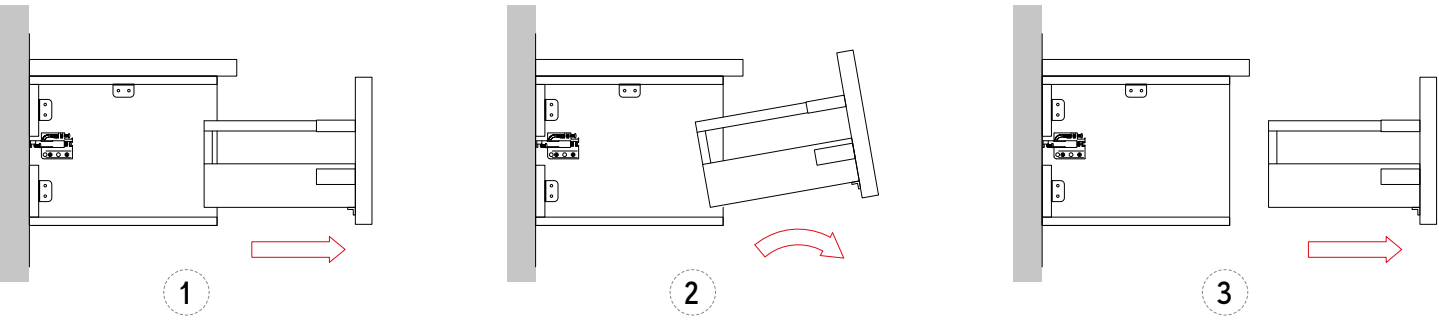
V4 - FRONT PANEL SWING - By manually adjusting the screw (**V4**), it is possible to adjust the in-out swing of the front panel, in order to recover any asymmetrical lights on the side of the drawer.

Reling removal



To remove the reling completely, remove the pressure lock located on the back of the reling (at the rear of the drawer) and then turn it to loosen the expansion pin attached to the front panel. Once this has been done, it can be removed by pulling it out of its housing.

Complete removal of the entire drawer



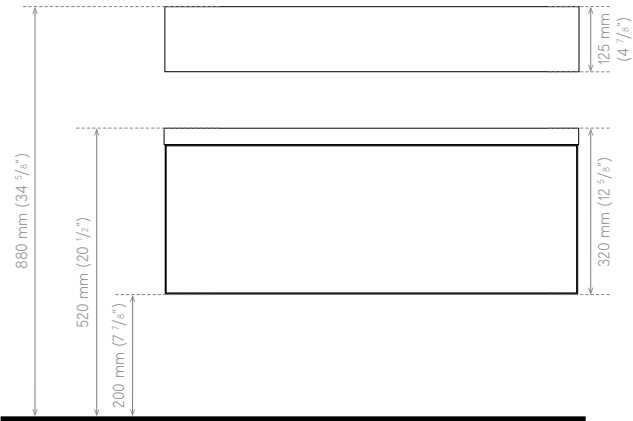
Follow the arrows to completely remove the drawer from the drawer unit.

1 - Pull the drawer out completely until the guides stop sliding

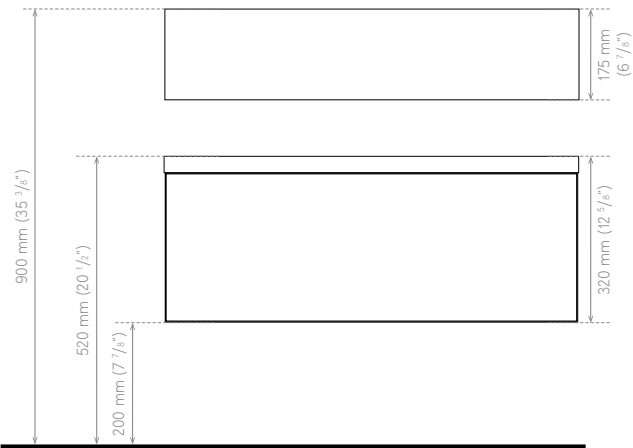
2 - Make an up-and-down motion while continuing to pull the drawer outwards.

3 - When the drawer has been lowered back to its normal position, pull the drawer outwards.

Recommended reference heights:



Recommended heights for washbasin with drawer unit



Recommended heights for designer washbasin with drawer unit



ATLAS CONCORDE S.p.A. declines all responsibility deriving from improper use of the product, tampering, incorrect installation or maintenance of the product.

CAUTION: Install the products following all the instructions provided by Atlas Concorde in this manual in order to avoid possible falls or tipping over. Also pay particular attention to the drawer travel when opening.

Detailed Technical sheet and DOP downloadable from the webpage

Copyright 2022 by Ceramiche Atlas Concorde S.p.A.
March 2022